

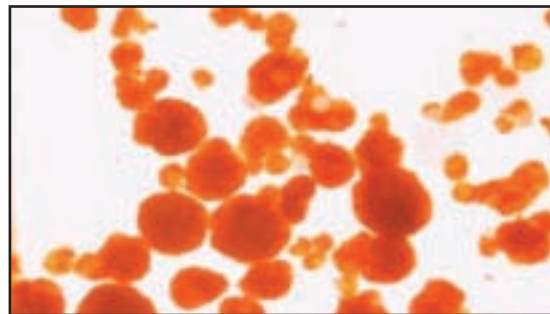


**CUSTOMBIOTECH**

# Liberase Enzyme Blends

*Leading Performance in Tissue Dissociation*

- High-quality blend of Collagenase I/II and a neutral protease (Research Grade, GMP Grade, and/or Sterile Filtered)
- Mammalian Tissue Free (MTF) product
- Minimal lot-to-lot variability
- Dissociation of pancreas, adipose, liver, tumors, umbilical cord, and other tissues
- Human adult stem cell and hepatocyte isolation
- Increased cell yield, viability, and functionality



Human Islets isolated by Liberase MTF C/T GMP Grade

For more information, please visit  
[custombiotech.roche.com/liberasegmp](http://custombiotech.roche.com/liberasegmp)  
[www.collagenase.com](http://www.collagenase.com)

Liberase Enzyme Blends are for further processing only.

LIBERASE is a trademark of Roche.

© 2010 Roche Diagnostics GmbH. All rights reserved.

#### Your Roche Custom Biotech Customer Service

Europe, Middle East, Africa,  
and Latin America:

Phone +49 621 759 8580  
Fax +49 621 759 6385

Japan:

Phone +81 3 5443 5285  
Fax +81 3 5443 7934

Asia Pacific:

Phone +65 6371 6638  
Fax +65 6371 6601

Canada:

Phone +1 450 686 7050  
Fax +1 450 686 7012

United States:

Phone +1 800 428 5433,  
ext. 14649 (toll-free)  
Fax +1 317 521 4065

Roche Diagnostics GmbH  
Roche Applied Science  
Werk Penzberg  
82372 Penzberg, Germany

