

# MCRM



## MICHIGAN CENTER FOR REGENERATIVE MEDICINE

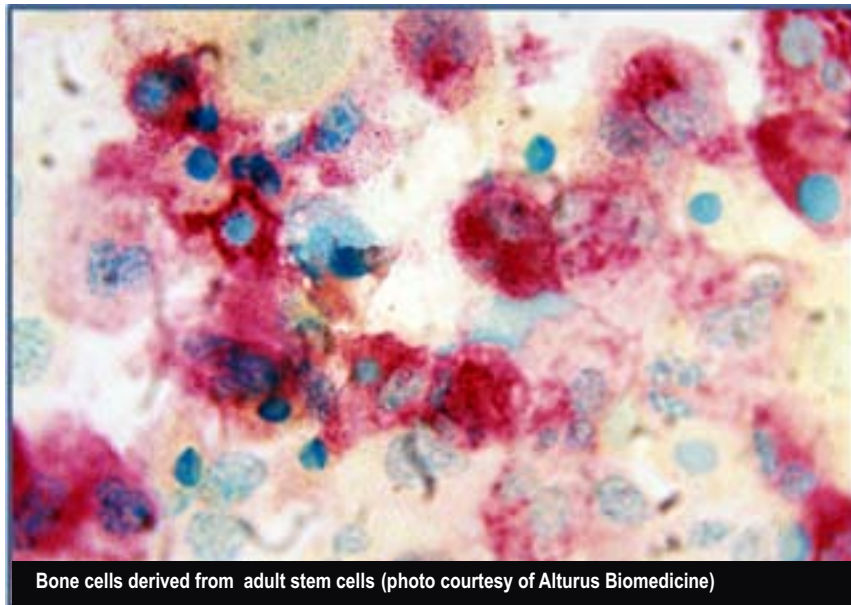
A nonprofit Center of Excellence in Regenerative Medicine

- ⊙ FDA-compliant GMP/CGTP cell manufacturing facility
- ⊙ Expertise in clinical trial planning, execution, and Regulatory Affairs
- ⊙ State-of-the-art laboratories

### MCRM AFFILIATED COMPANIES

The MCRM is recruiting emerging-phase, independently-funded regenerative medicine firms as Affiliate Companies. Affiliation with the Center has the following advantages:

- Affiliate companies occupy proprietary office and lab space and have access to economic incentive packages.
- Localizing the Company or clinical GMP/CGTP production at the MCRM translates into cost savings estimated at about \$1,000,000+ per company.
- Access to expertise in the MCRM Regulatory Affairs and Clinical Trials Office.
- MCRM is designed to allow Affiliates rapid startup and faster product development times.



Bone cells derived from adult stem cells (photo courtesy of Alturus Biomedicine)

### THE MCRM FACILITY

A 30,000 ft<sup>2</sup> state-of-the-art regenerative medicine facility in Western Wayne County Michigan, encompassing a 2,600 ft<sup>2</sup> Good Manufacturing Practice/Current Good Tissue Practice FDA-compliant facility for human stem cell pro-

pagation and stem cell device fabrication, storage and shipping.

### MCRM RESEARCH DIVISION

The R&D division investigates mechanisms of human adult stem cell and tissue development and makes its discoveries available to the regenerative medicine industry at large via out-licensing and/or research collaborations. Additionally, MCRM is structured to promote partnerships/collaborations with large pharmaceutical companies.



Facility plan

Featured MCRM Affiliate Company:

### Innovative Biotherapeutics, Inc.

Innovative BioTherapeutics (IBT), a University of Michigan spin-out, develops adult stem cell therapies to treat acute renal failure, end stage renal disease, congestive heart failure, and diabetes. Now in the final stages of large animal preclinical testing and soon to be needing GMP / CGTP facilities to produce cell devices for clinical trials, IBT sees MCRM as a perfect location for clinical production of its bioartificial kidney.